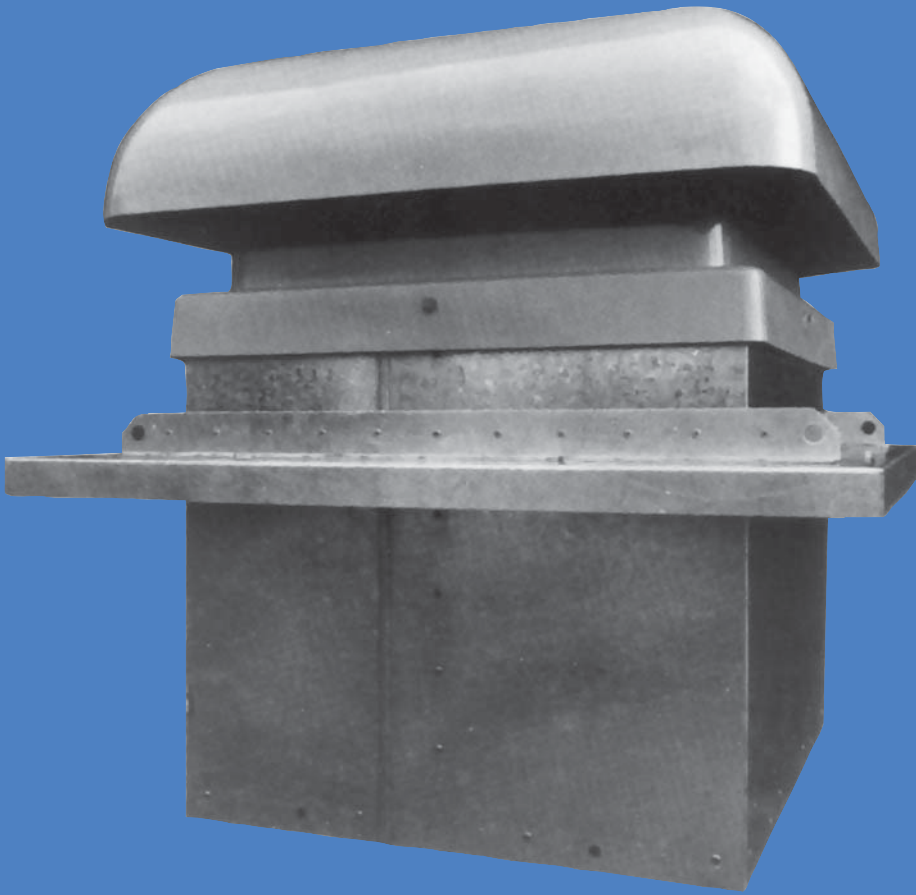


# WAC

WAC For use with Roof Fans



WAC **F**

# WAC ACOUSTIC CURBS

## SPECIFICATION

### Construction

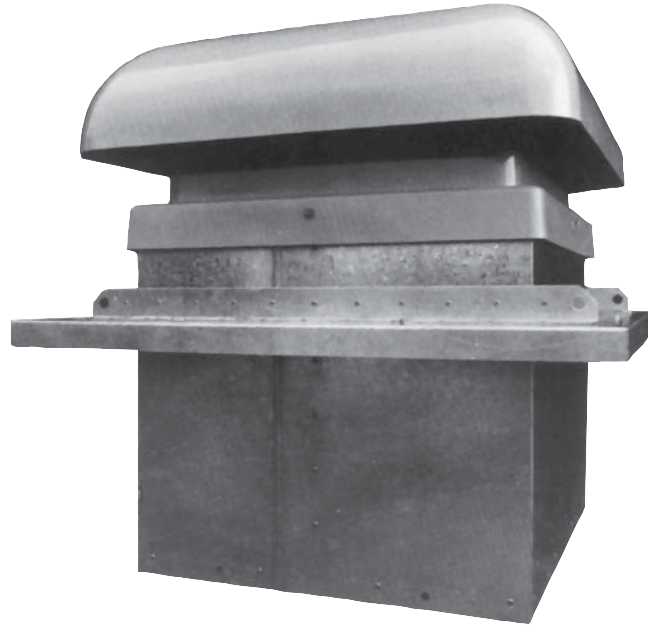
The curb consists of square section casing fabricated from pre-galvanised steel sheet, containing a vertical assembly of acoustic splitters and liners.

The splitters have pre-galvanised steel frames and the absorbent material is resin bonded mineral fibre with an erosion resistant facing.

An impervious moisture assessments lining is available for moist air applications. The use of the lining also allows the curb to be low pressure steam cleaned. Some reduction in attenuation due to the lining will be experienced.

The skirts and flanges are also produced from galvanised sheet steel.

Lifting Lugs are provided on all sizes.



### Mounting

The curb may be mounted on the builders' roof curb, purlin box surrounding the roof opening in one of two ways.

### Recessed Mounting

For this method a skirt is attached to the outside of the casing for mounting the unit within the roof opening. The position of the skirt can be factory set, to offer a range of the sound attenuating curb above or below the roof opening.

### Base mounting

The unit is positioned on top of the builders' roof curb with the unit covering the timber.

Coachscrews and sealing washers are provided with both forms of mounting, for assembly to the builders' curb. Customers should provide flashing where wooden curbs are exposed.

Electrical connections to the roof unit fan motor terminal box may be taken from a junction box installed adjacent to the sound attenuating curb via a flexible conduit led up through one of the curb airways.

### Order Details

When ordering a sound attenuating curb state the WAC size and whether to be Recessed Mounting or Base Mounting. If for recessed Mounting state dimensions F - necessary for the setting of the mounting height. See drawing opposite. When no dimension is given the maximum dimension F is supplied.

When required for use with roof units employing flameproof motors, please specify as "WACF" plus the size. The use of flameproof motors necessitates the rearrangement of the splitters with some loss of attenuation.

### Electrical connection

### Attenuation

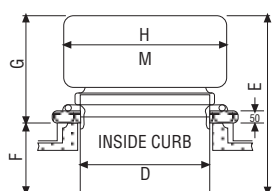
Size	Attenuation dB Octave band mid-frequency Hz							
	63	125	250	500	1K	2K	4K	8K
WAC 10-12	4	7	12	16	21	22	20	13
WAC 13-16	5	9	12	18	23	21	17	14

# WAC ACOUSTIC CURBS

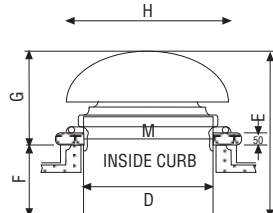
## DIMENSIONS AND WEIGHTS

### RECESS MOUNTED

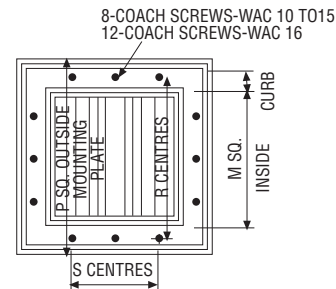
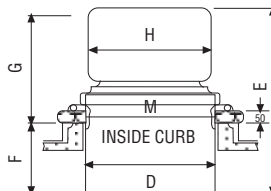
#### DVM & DVC



#### DSP, DSM &

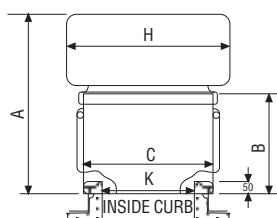


#### DVP

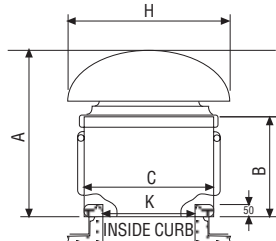


### BASE MOUNTED

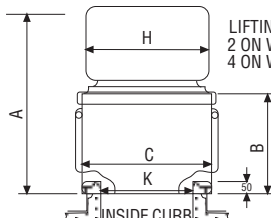
#### DVM & DVC



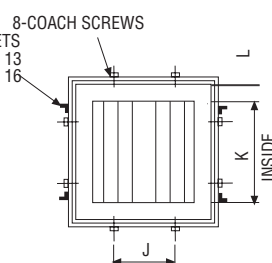
#### DSP, DSM & DSC



#### DVP



### RECESSES MOUNTING



ACOUSTIC CURBS TO SUIT FLAMEPROOF MOTORS HAVE

SUFFIX F ADDED TO WAC

### BASE MOUNTING

	WAC 10	WAC 11			WAC 12			WAC 13			WAC 14			WAC 15			WAC 16																								
DIM	DSP 250	DSM 200	DSP 315/355			DSP 400	DSM 330	DSC 330	DVM 330	DVC 330	DVP400	DSP 450/500	DSM 400	DSC 400	DVM 400	DVC 400	DVP 450/500	DSP 630	DSM 500	DSC 500	DVM 500	DVC 500	DVP 630	DSP 710/800	DSM 630	DSC 630	DVM 630	DVC 630	DVP 710/800	DSP 1000	DSM 760	DSC 760	DVM 760	DVC 760	DVP 1000						
	A	708	813	875	918	888	953	993	943	1023	1073	1053	1143	1208	1228	1348	1428	1478	1558	1648																					
B	500	575			605			615			650			750			840																								
C	420	495			570			670			870			1020			1220																								
D	420	495			570			670			870			1020			1220																								
E	708	813	875	918	888	953	993	943	1023	1073	1053	1143	1208	1228	1348	1428	1478	1558	1648																						
	F	MAX 330	404			435			446			480			580			670																							
	MIN 50	55			85			96			60			90			110																								
G	MAX 658	758	820	863	803	868	908	847	927	977	993	1083	1148	1138	1258	1338	1368	1448	1538																						
	MIN 378	408	470	513	453	518	558	497	577	627	573	663	728	648	768	848	808	888	978																						
H	480	600	600	470	710	710	530	820	820	630	1030	1030	780	1300	1260	950	1700	1560	1180																						
J	150	200			250			350			550			650			850																								
K	250	325			400			500			700			800			1000																								
L	75	75			75			75			75			100			100																								
M	500	600			600			700			900			1200			1500																								
N	75	75			75			75			100			100			100																								
P	684	784			784			884			1140			1440			1740																								
R	575	675			675			775			1000			1300			1600																								
S	260	320			320			360			450			800			980																								
Weights	18kg	25kg			31kg			37kg			55kg			74kg			109kg																								
curb																																									
Weights	25kg	33kg			38kg			37kg			70kg			100kg			147kg																								
recess																																									

All dimensions in millimetres

Due to a policy of continuous development and improvement the right is reserved to supply products which may differ from those illustrated and described in this publication. Certified dimensions will be supplied on request on receipt of order.